



Designer  
Windows and  
Doors Ltd

Moderna SH



# INTRODUCTION

# INTRODUCTION

ModernaHS is for a super life. Our continuous research and development leads to offer unique solutions like bullet proof and hurricane proof and thermal insulation and so on with many innovative features, which totally meet the needs of our customers. So, you aren't just installing windows and doors. You're installing excellence.

With 15 years of experience, superhouse is one of the most advanced companies in China and in the design & production of aluminium doors & window products by meet AS2047 Standard, NFRC Label, NOA..



Main Market

- America
- Canada
- Australia

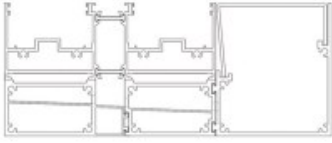
- ✓ Meet Australia 2047 Standard
- ✓ Meet Australia bushfire BAL Standard
- ✓ Meet Australia AS2208 Standard
- ✓ Meet Acoustic 42DB
- ✓ Meet Bullet Proof UL L3 Standard
- ✓ Meet CSA AAMA 101 Standard
- ✓ Meet Florida Products Approved
- ✓ Meet USA NFRC Standard



OUR OFFICE



OUR FACTORY



**SP146**  
SLIM SLIDING DOOR  
SPECIAL LINE



Our 146 series with 2cm edge simplification has a huge view. Abandon the traditional thick and heavy frame of moving door, the minimalist push and pull is more close to the natural environment Nearly. Higher glass to aluminum frame ratio, heat insulation performance system effectively improved. Hidden under the Rail - with roller bearing, single fan load up to 500KGS. Could meet 3000\*3000mm Per panel size.

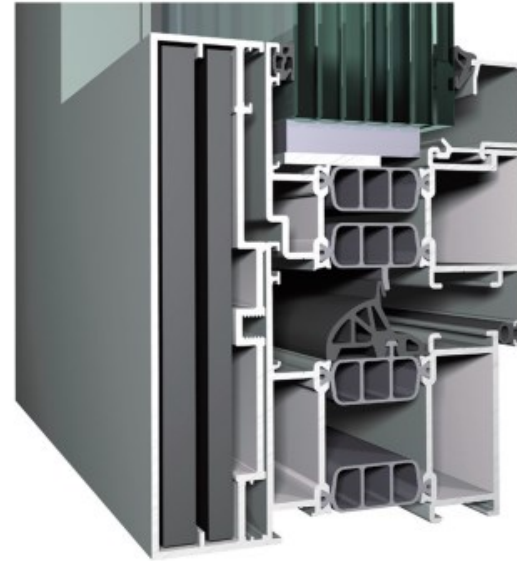
**TECHNICAL DATA**

Visible Width (outside)	Frame	146mm
Profile Depth	Sash	Refer to section drawing
Depth of glass groove	Frame	
Glass Thickness	Sash	

**PERFORMANCE**

Thermal Insulation	1.1 W/m <sup>2</sup> K
Acoustic Performance	<45 dB
Air Tightness	0.4m <sup>3</sup> (m <sup>2</sup> h)
Wind Load Resistance	0.5KPa
Water Penetration	500Pa
Security Level	

**SP86**  
BULLET PROOF  
SPECIAL LINE



Our special line means bullet proof and hurricane proof, bullet proof meet USA UL L3 & L5 Standard, and hurricane proof meets USA florida building approved. Which system are with reinforcement steel inside and with bullet proof glass. Which system are popular used in hurricane zone and the Embassy and army zone.

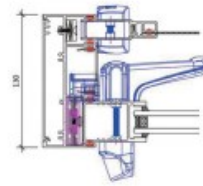
**TECHNICAL DATA**

Visible Width (outside)	Frame	Refer to our section drawing
Profile Depth	Sash	
Depth of glass groove	Frame	
Glass Thickness	Sash	

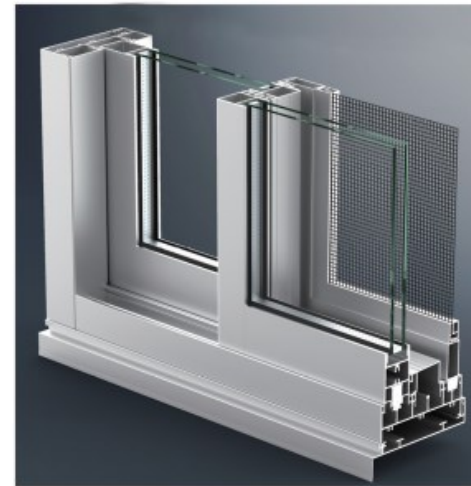
**PERFORMANCE**

Thermal Insulation	1.1 W/m <sup>2</sup> K
Acoustic Performance	45dB
Air Tightness	0.4m <sup>3</sup> (m <sup>2</sup> h)
Wind Load Resistance	0.5KPa
Water Penetration	900Pa
Security Level	





**SP100**  
SLIDING DOOR  
COMMERCIAL LINE



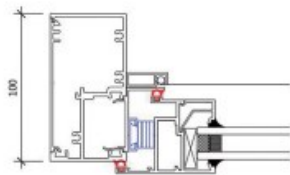
SP100 Sliding door system, it could be equipped with triple glass to realize better sound insulation and energy-saving. This system is equipped with heavy duty could load maximally 300kg weight, it could create smoother and more reliable operation experience for users during the repeated opening and closing. Available with stainless steel mesh and could meet 600 pa water penetration. Popular used in Australia Market.

**TECHNICAL DATA**

Visible Width (outside)	Frame	50mm
	Sash	60mm
Profile Depth	Frame	130mm
	Sash	39.5mm
Depth of glass groove		16mm
Glass Thickness		24mm

**PERFORMANCE**

Thermal Insulation	us3.8 W/m <sup>2</sup> K
Acoustic Performance	42dB
Air Tightness	0.4m <sup>3</sup> (m <sup>2</sup> h)
Wind Load Resistance	≥0.5KPa
Water Penetration	600Pa
Security Level	



## SP100

AWNING WINDOW  
COMMERCIAL LINE



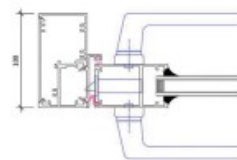
SP100 Chain winder windows could be equipped with double or triple glass to realize better sound insulation and energy-saving. This system is with Australia local 125mm limited opening restrictor Available with stainless steel mesh or flyscreen . And with Australia standard and with 450 pa water penetration and popular used in Australia Market.

### TECHNICAL DATA

Visible Width (outside)	Frame	50mm
	Sash	42mm
Profile Depth	Frame	100mm
	Sash	50mm
Depth of glass groove		20mm
Glass Thickness		29mm

### PERFORMANCE

Thermal Insulation	$\leq 3.4 \text{ W/m}^2\text{K}$
Acoustic Performance	45 dB
Air Tightness	$0.4 \text{ m}^3(\text{m}^2\text{h})$
Wind Load Resistance	$\geq 0.5 \text{ KPa}$
Water Penetration	900Pa
Security Level	



## SP100

HINGED DOOR  
COMMERCIAL LINE



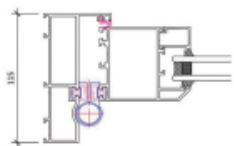
SP100 door is our classic model, available with high doorsill and low doorsill. Also match to crimesafe door for bushfire. And with available of stainless steel handle. Which also win Florida Products Approved ,popular used for university and hotel.. so on commercial application.

### TECHNICAL DATA

Visible Width (outside)	Frame	50mm
	Sash	75mm
Profile Depth	Frame	100mm
	Sash	46mm
Depth of glass groove		26mm
Glass Thickness		29mm

### PERFORMANCE

Thermal Insulation	$\leq 3.4 \text{ W/m}^2\text{K}$
Acoustic Performance	45 dB
Air Tightness	$0.4 \text{ m}^3(\text{m}^2\text{h})$
Wind Load Resistance	$\geq 0.5 \text{ KPa}$
Water Penetration	600Pa
Security Level	



**SP115**  
BI-FOLDING DOOR  
COMMERCIAL LINE



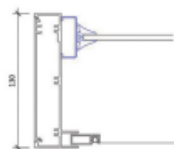
Our SP115 Bifolding door could meet design of 220;330;431;550;543;633;651;743 and so on , and also could with retractor flyscreen.And with heavy duty hinge and meet 2800mm to 3000mm H. With Straight sash to improve aestheticssash .Also It is the flagship prduuct in ModernaHS system.

**TECHNICAL DATA**

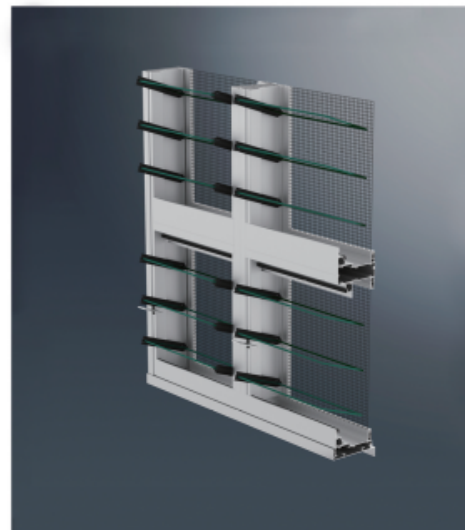
Visible Width (outside)	Frame	30mm
	Sash	78mm
Profile Depth	Frame	115mm
	Sash	66mm
Depth of glass groove		22mm
Glass Thickness		26mm

**PERFORMANCE**

Thermal Insulation	$u \leq 3.4 \text{ W/m}^2\text{K}$
Acoustic Performance	45 dB
Air Tightness	$0.4 \text{ m}^3(\text{m}^2\text{h})$
Wind Load Resistance	$\geq 0.5 \text{ KPa}$
Water Penetration	600Pa
Security Level	



**SP130**  
CLASS LOUVRE  
COMMERCIAL LINE



Our SP130 louvre is also very popular for Australia market and which could be with the flyscreen and also SS mesh. And available for 6mm glass and 6.38mm glass. And it is the flagship product in ModernaHS system. And which pass 150 pa water penetration for the AS2047 Standard.

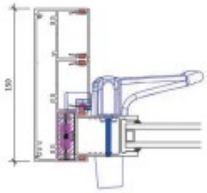
**TECHNICAL DATA**

Visible Width (outside)	Frame	25mm
	Sash	14.5mm
Profile Depth	Frame	130mm
	Sash	40mm
Depth of glass groove		13mm
Glass Thickness		6mm

**PERFORMANCE**

Thermal Insulation	$u \leq 4.4 \text{ W/m}^2\text{K}$
Acoustic Performance	35dB
Air Tightness	$0.4 \text{ m}^3(\text{m}^2\text{h})$
Wind Load Resistance	$\geq 0.5 \text{ KPa}$
Water Penetration	150Pa
Security Level	





**SP150**  
**STACKER DOOR**  
**COMMERCIAL LINE**



SP150 Sliding door system, it could be with triple glass to realize better sound insulation and energy-saving. This system is with heavy duty could load maximally 300kg weight, it could create smoother and more reliable operation experience for users during the repeated opening and closing. Available with stainless steel mesh and could meet 600 pa water penetration. Popular used in Australia Market.

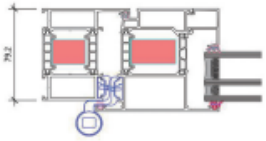
**TECHNICAL DATA**

Visible Width (outside)	Frame	50mm
	Sash	60mm
Profile Depth	Frame	150mm
	Sash	39.5mm
Depth of glass groove		16mm
Glass Thickness		24mm

**PERFORMANCE**

Thermal Insulation	us3.4 W/m²K
Acoustic Performance	45 dB
Air Tightness	0.4m³(m²h)
Wind Load Resistance	≥0.5KPa
Water Penetration	600Pa
Security Level	





**SP80**  
Hinge door  
STAR LINE



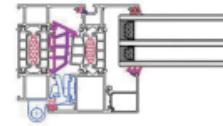
Our P80 System is excellent heat insulating function, which belongs to our star system with very high quality and with kick plate. It could be realized inwards opening, outwards opening, low doorsill and high doorsill. With design of lift & sliding door, and bi-folding door. Also there are different kinds of hardware to choose and it could meet C and U Groove with multi-point locking system.

**TECHNICAL DATA**

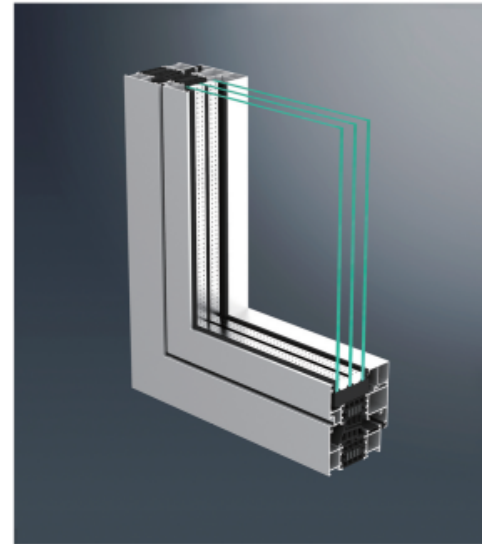
Visible Width (outside)	Frame	51.2mm
	Sash	81.5mm
Profile Depth	Frame	79mm
	Sash	89mm
Depth of glass groove		27mm
Glass Thickness		25mm

**PERFORMANCE**

Thermal Insulation	$\leq 1.4 \text{ W/m}^2\text{K}$
Acoustic Performance	45dB
Air Tightness	$0.4 \text{ m}^3(\text{m}^2\text{h})$
Wind Load Resistance	$\geq 0.5 \text{ KPa}$
Water Penetration	600Pa
Security Level	



**SP80**  
TILT&TURN WINDOW  
STAR LINE SYSTEM



Our P80 System is excellent heat insulating function, through the adoption of 35mm thermal insulation aluminum profile, it could keep the K-value less than  $1.3 \text{ w/m.k}$ . It could not only satisfy users' strict requirements on physical function, but also is the flagship product in ModernaHS system.

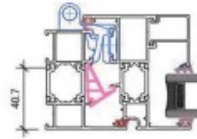
**TECHNICAL DATA**

Visible Width (outside)	Frame	30mm
	Sash	37mm
Profile Depth	Frame	79mm
	Sash	
Depth of glass groove		27mm
Glass Thickness		61mm

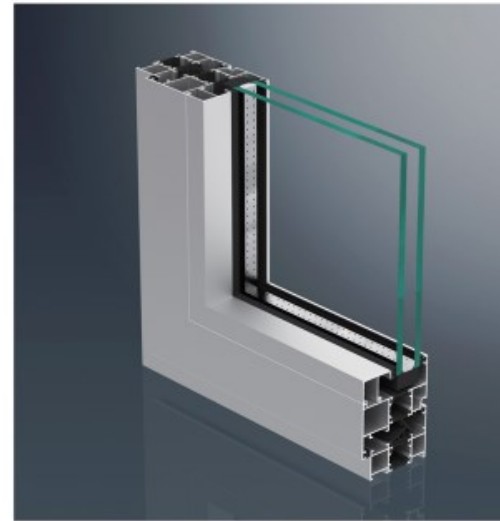
**PERFORMANCE**

Thermal Insulation	$\leq 1.4 \text{ W/m}^2\text{K}$
Acoustic Performance	45dB
Air Tightness	$0.4 \text{ m}^3(\text{m}^2\text{h})$
Wind Load Resistance	$\geq 0.5 \text{ KPa}$
Water Penetration	900Pa
Security Level	





**SP65 T**  
**CASEMENT WINDOW**  
**SUPERLINE SYSTEM**



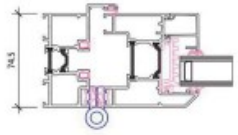
Our P65T System is excellent heat insulating function, through the adoption of 29mm thermal insulation aluminum profile, it could keep the K-value less than 1.6 w/m.k .It could not only satisfy users' strict requirement on physical function, but also realize varopis segmentations of window& door.It is the flagship product in ModernaHS system.

**TECHNICAL DATA**

Visible Width (outside)	Frame	30mm
	Sash	35mm
Profile Depth	Frame	65.5mm
	Sash	75.5mm
Depth of glass groove		27mm
Glass Thickness		48mm

**PERFORMANCE**

Thermal Insulation	$\leq 1.6 \text{ W/m}^2\text{K}$
Acoustic Performance	45dB
Air Tightness	$0.4 \text{ m}^3(\text{m}^2\text{h})$
Wind Load Resistance	$\geq 0.5 \text{ KPa}$
Water Penetration	900Pa
Security Level	



**SP75T**  
BIFOLDIGN DOOR  
SUPERLINE SYSTEM



Our Folding door combines design, comfort and spatial efficiency. The boundary between inner and outer space can really disappear through various opening ways. With the folding principle of this high quality system, you can achieve both comfort and transparency. According to your specific requirements, With low doorsill and high doorsill ,available in deisgn of 220;330;321;431;541;633;743..



**SP153T**  
SUPERLINE SYSTEM  
STAR LINE



Our SP153T System is a sliding and lift&sliding door With excellent thermal insulation. The perfect design maximizes glass area and enhances comfort. which system has a small threshold scheme to facilitate access to buildings. Auto-start solution ensures maximum comfort. The lift&sliding door can accommodate large-sized glass doors weighing up to 400 kg. Which meets the requirements of Class 2 anti-theft performance

**TECHNICAL DATA**

Visible Width (outside)	Frame	36mm
	Sash	73mm
Profile Depth	Frame	75mm
	Sash	75mm
Depth of glass groove		29mm
Glass Thickness		51mm

**PERFORMANCE**

Thermal Insulation	us2.4 W/m²K
Acoustic Performance	43 dB
Air Tightness	0.4m³(m²h)
Wind Load Resistance	≥0.5KPa
Water Penetration	600Pa
Security Level	

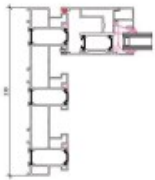
**TECHNICAL DATA**

Visible Width (outside)	Frame	64mm
	Sash	120mm
Profile Depth	Frame	153mm
	Sash	67mm
Depth of glass groove		26mm
Glass Thickness		53mm

**PERFORMANCE**

Thermal Insulation	us1.6 W/m²K
Acoustic Performance	43 dB
Air Tightness	0.4m³(m²h)
Wind Load Resistance	≥0.5KPa
Water Penetration	600Pa
Security Level	





**SP239T**  
SLIDING DOOR  
SUPERLINE SYSTEM



Our SP239T System is a sliding and lift&sliding door With excellent thermal insulation. The perfect design maximizes glass area and enhances comfort. which system has a small threshold scheme to facilitate access to buildings. Auto-start solution ensures maximum comfort. The lift&sliding door can accommodate large-sized glass doors weighing up to 400 kg. Which meets the requirements of Class 2 anti-theft

**TECHNICAL DATA**

Visible Width (outside)	Frame	56.5mm
	Sash	100mm
Profile Depth	Frame	239mm
	Sash	67mm
Depth of glass groove		26mm
Glass Thickness		53mm

**PERFORMANCE**

Thermal Insulation	us1.6 W/m²K
Acoustic Performance	43dB
Air Tightness	0.4m³(m²h)
Wind Load Resistance	≥0.5KPa
Water Penetration	600Pa
Security Level	





**Factory View**

For pursue outstanding quality,  
we import national standard high  
quality auto-machines



**Dust-Free Plant**



Meanwhile, under international standard  
quality system, which helps our quality  
better than competition's



**SGS Approved Packing**



**Factory View**

For pursue outstanding quality,  
we import national standard high  
quality auto-machines



**Dust-Free Plant**



Meanwhile, under international standard  
quality system, which helps our quality  
better than competition's



**AUTO-MACHINES**

